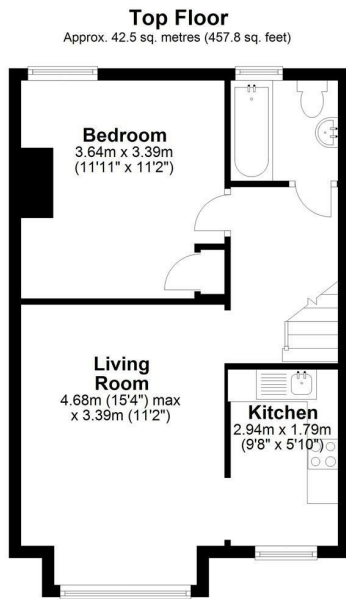




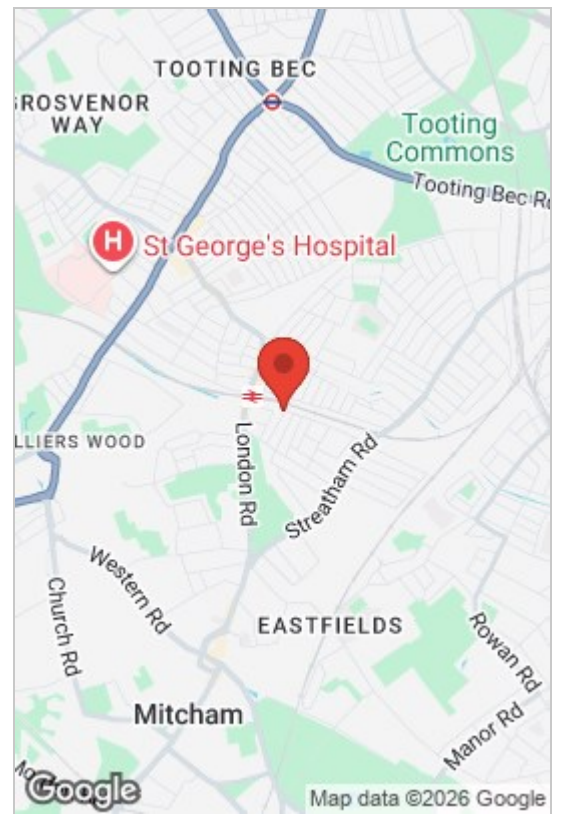
**Heaton Road, Surrey, CR4 2BW**  
**£1,300 PCM**

 1  1  1  D





Total area: approx. 42.5 sq. metres (457.8 sq. feet)



- Double Bedroom
- Great Location
- Double Glazing
- Wooden Flooring
- First Floor
- Central Heating
- Open-plan Kitchen/reception
- Excellent Transport Links

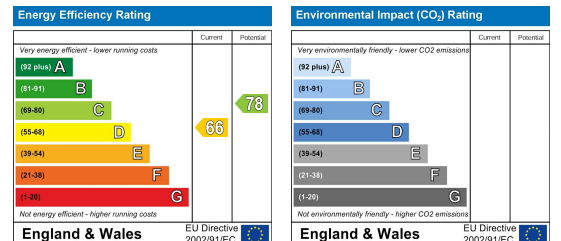
A well-presented one-bedroom first-floor flat, offered furnished and ideally located for excellent transport links.

The property comprises a bright open-plan kitchen/reception room with wooden flooring, a separate double bedroom, and a fitted bathroom. The layout offers practical and comfortable living, ideal for professionals or couples.

Further benefits include a modern finish throughout and ready-to-move-in accommodation.

Situated within a short walk of Tooting Junction railway station and local bus routes, the property provides convenient access into Central London, along with a variety of nearby shops, cafes, and amenities.

Council Tax Band:



These particulars, whilst believed to be accurate are set out as a general outline only for guidance and do not constitute any part of an offer or contract. Intending purchasers should not rely on them as statements of representation of fact, but must satisfy themselves by inspection or otherwise as to their accuracy. No person in this firm's employment has the authority to make or give any representation or warranty in respect of the property.